



# HOMER<sup>2</sup>

SUITES BY HILTON

## Home2 Suites - Oasis Retrofit

The Retrofit Guide is a supplementary tool for Owners in conjunction with the Home2 Suites prototype documents (Version 2.2). This guide highlights the design updates that address the current needs of our guests and plan enhancements to optimize the function and operation of the Oasis space.

The document provides an overview of the previous Lobby floor plan, a demolition plan, the revised Lobby floor plans: Minimum, Mid-Range, Full-Range, Long Term and key interior elevations of the Inspired Table, Window Perch, Entertainment/Coffee Wall and repurposed Coffee Station with explanatory summaries of the update objectives.

# P **PROTOTYPE V 2.1** (Existing Plan)

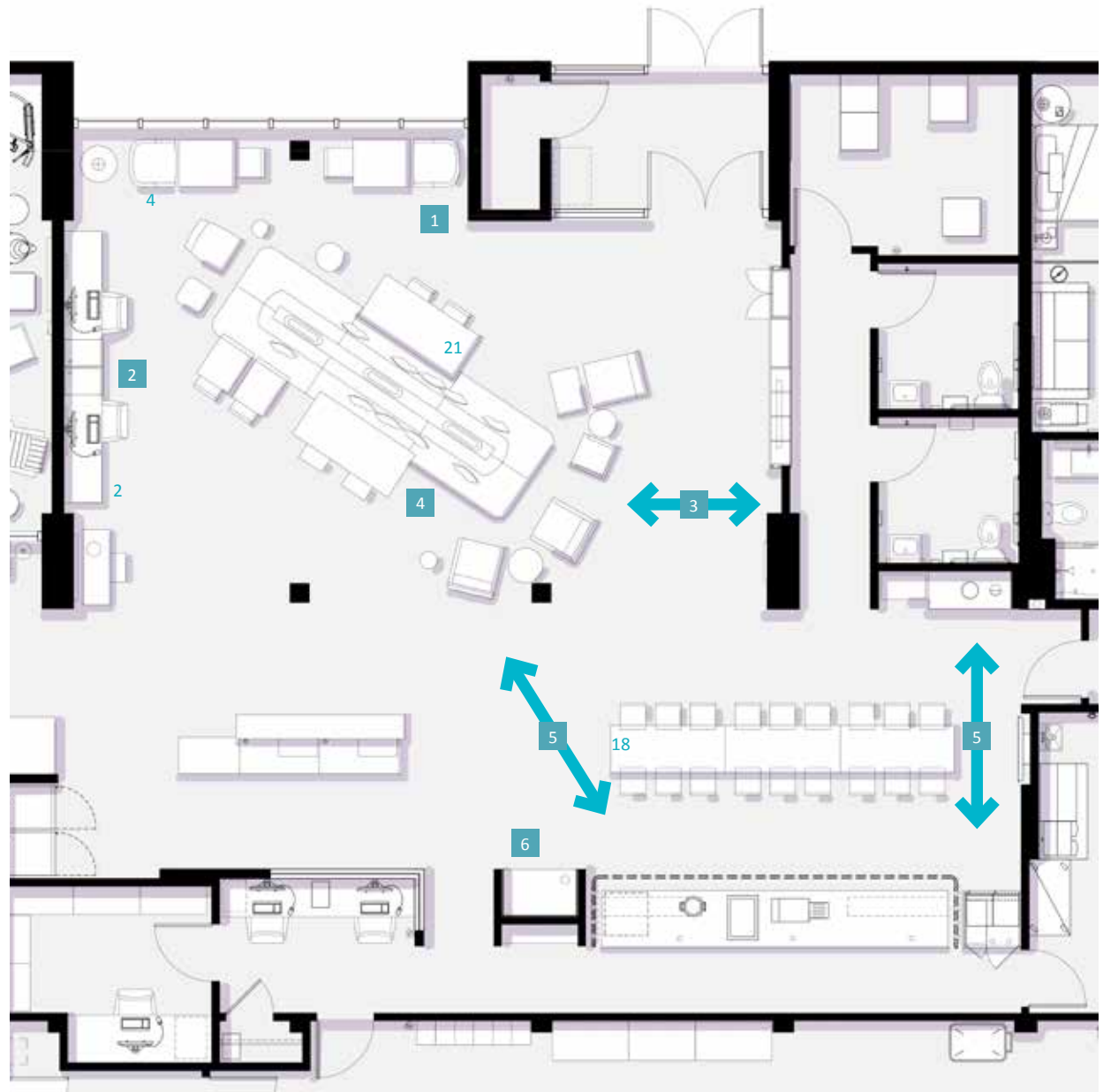
## CURRENT ISSUES:

- 1 Limited seating and seating types within the Lobby.
- 2 Business Center over delivers in terms of workspace needed in light of today's technology.
- 3 Banquette orientation creates a pinch point to the exterior doors and Media Wall.
- 4 Limited seating at the banquette, and 4-tops limit flexibility of seating for guests.
- 5 Communal tables limit the flow and access to the Inspired Table.
- 6 Current location of coffee station adds congestion to the Inspired Table during breakfast and reduces available countertop for serving.

## SEATING COUNT:

Inspired Table Seating: 18  
 Lobby (Banquette Seating): 21  
 Lobby (Ancillary Seating): 6

**Seating Total: 45**



# P **PROTOTYPE V 2.1** (Demolition Plan)

## DEMOLITION SUMMARY:

### Minimum Plan:

- 1 Remove center table and chairs.
- 2 Remove or cap/conceal exposed electrical floor outlets at communal table.
- 3 Remove tables and chairs at window.

### Mid-Range Plan:

- 4 Remove Media Wall.
- 5 Soffit above banquette to be removed (if applicable).
- 6 Remove and relocate pendant lights.
- 7 Remove and relocate banquette.
- 8 Repurpose coffee station.

### Full-Range Plan:

- 9 Inspired Table cabinetry, coffee station, soffit and drapery to be removed.

### Long Term:

- 10 Remove business center desks.
- 11 Remove and relocate pendant lights above desk.
- 12 Remove wing wall to improve visibility of trash/bus station.



**PROTOTYPE V 2.2** (Minimum Plan)

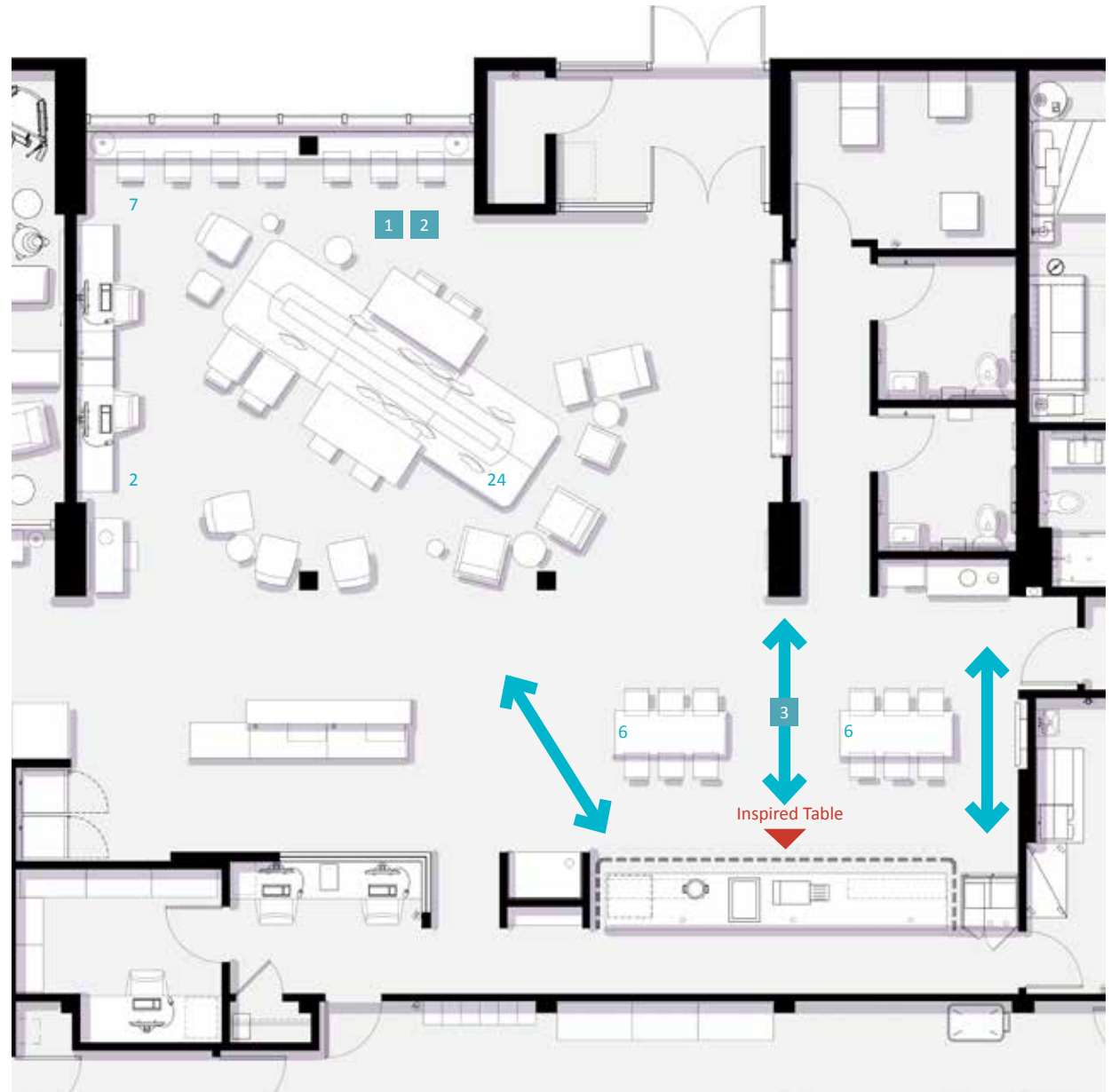
## SUMMARY OF CHANGES:

- 1 Replace table & chairs at front window with a continuous perch and counter-height stools.
- 2 Add power to wall at each end of perch and column.
- 3 Remove center high top table to improve flow and access to the Inspired Table.

## SEATING COUNT:

Inspired Table Seating:	12
Lobby (Banquette Seating):	24
Lobby (Ancillary Seating):	9

**Seating Total:** 45





# P PROTOTYPE V 2.2 (Mid-Range Plan)

## SUMMARY OF CHANGES:

- 1 Replace table & chairs at front window with a continuous perch and counter-height stools.
  - 2 Add power to wall at each end of perch and column.
  - 3 Remove center high top table to improve flow and access to the Inspired Table.
  - 4 Relocate coffee station to Media Wall to alleviate traffic flow issues with the Inspired Table during breakfast.
  - 5 Replace "Guarantee Sign".
  - 6 Repurpose former coffee station as Beer/Wine Display or Waffle Station.
  - 7 Reverse the angle of the banquette to open access to the new coffee station (at entertainment wall) and to exterior doors.
- End Loaded Hotel:** Repositioning banquette is optional but recommended if there is heavy traffic flow in front of Coffee Station/Media Wall.
- Center Loaded Hotel:** Reposition banquette and pendant light fixtures to accommodate traffic flow to Coffee Station/Media Wall.
- 8 Relocate existing pendant lights over banquette.

## SEATING COUNT:

Inspired Table Seating: 12  
 Lobby (Banquette Seating): 24  
 Lobby (Ancillary Seating): 9

**Seating Total:** 45



# P **PROTOTYPE V 2.2** (Full-Range Plan)

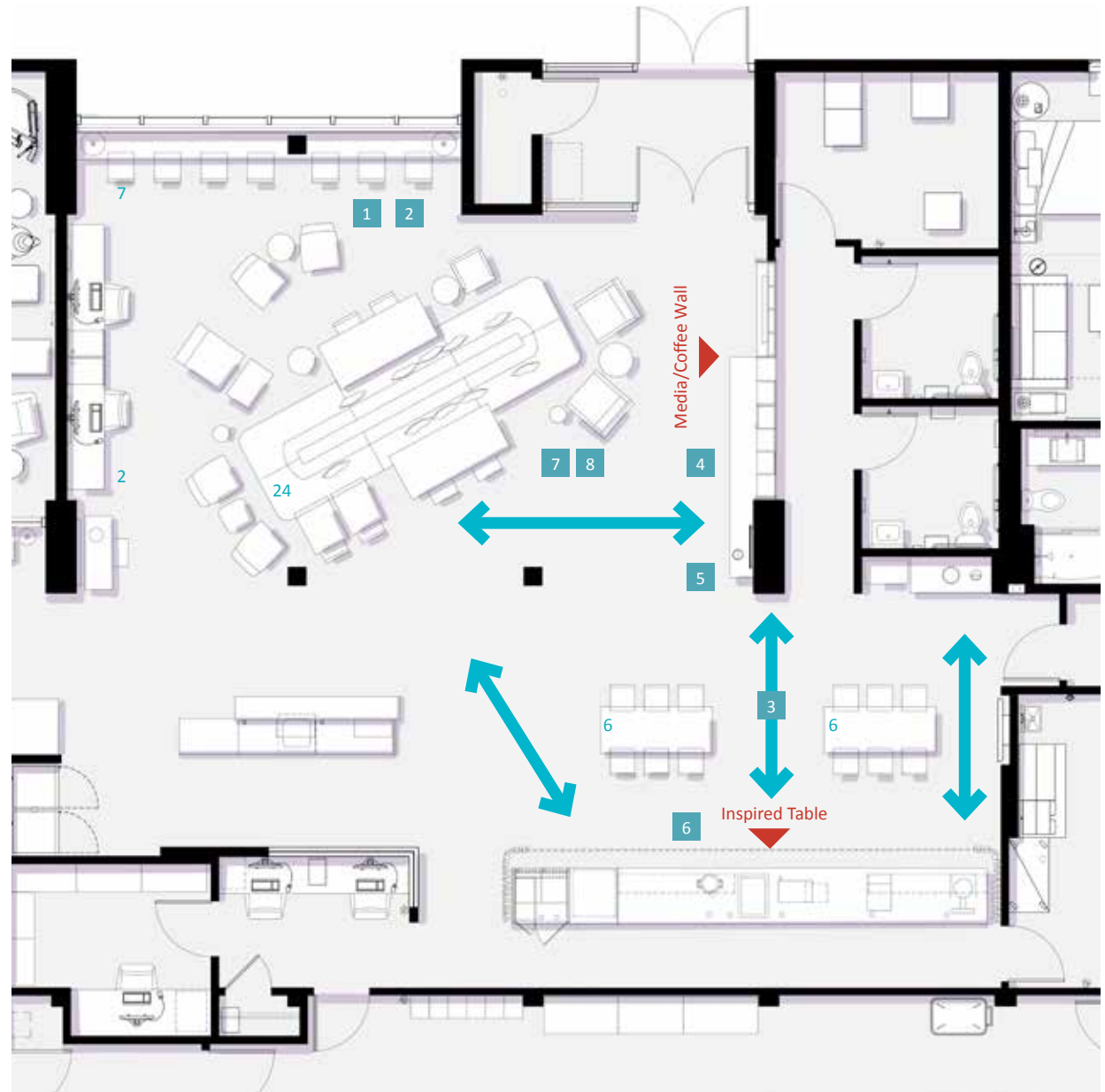
## SUMMARY OF CHANGES:

- 1 Replace table & chairs at front window with a continuous perch and counter-height stools.
  - 2 Add power to wall at each end of perch and column.
  - 3 Remove center high top table to improve flow and access to the Inspired Table.
  - 4 Relocated coffee station to Media Wall to alleviate traffic flow issues with the Inspired Table during breakfast.
  - 5 Replace "Guarantee Sign".
  - 6 Replace Inspired Table and drapery, increases countertop serving area.
  - 7 Reverse the angle of the banquette to open access to the new coffee station (at entertainment wall) and to exterior doors.
- End Loaded Hotel:** Repositioning banquette is optional but recommended if there is heavy traffic flow in front of Coffee Station/Media Wall.
- Center Loaded Hotel:** Reposition banquette and pendant light fixtures to accommodate traffic flow to Coffee Station/Media Wall.
- 8 Relocate existing pendant lights over banquette.

## SEATING COUNT:

Inspired Table Seating: 12  
 Lobby (Banquette Seating): 24  
 Lobby (Ancillary Seating): 9

**Seating Total:** 45



# P PROTOTYPE V 2.2 (Long Term Plan)

## SUMMARY OF CHANGES:

- 1 Replace table & chairs at front window with a continuous perch and counter-height stools.
- 2 Add power to wall at each end of perch and column.
- 3 Removed center high top table to improve flow and access to the Inspired Table.
- 4 Relocated coffee station to Media Wall to alleviate traffic flow issues with the Inspired Table during breakfast.
- 5 Replace "Guarantee Sign".
- 6 Replace Inspired Table and drapery, increases countertop serving area.
- 7 Reverse the angle of the banquette to open access to the new coffee station (at entertainment wall) and to exterior doors.

**End Loaded Hotel:** Repositioning banquette is optional but recommended if there is heavy traffic flow in front of Coffee Station/Media Wall.

**Center Loaded Hotel:** Reposition banquette and pendant light fixtures to accommodate traffic flow to Coffee Station/Media Wall.

- 8 Relocate existing pendant lights over banquette
- 9 Install electrical floor boxes for new powered banquette.
- 10 Utilize 2-tops to create 4-tops for greater versatility around the banquette.
- 11 Reduce the length of the Business Center desk to accommodate 2 workstations. Relocate pendant light above each desk.
- 12 New bus station.
- 13 Remove wing wall to increase visibility of bus station.

## SEATING COUNT:

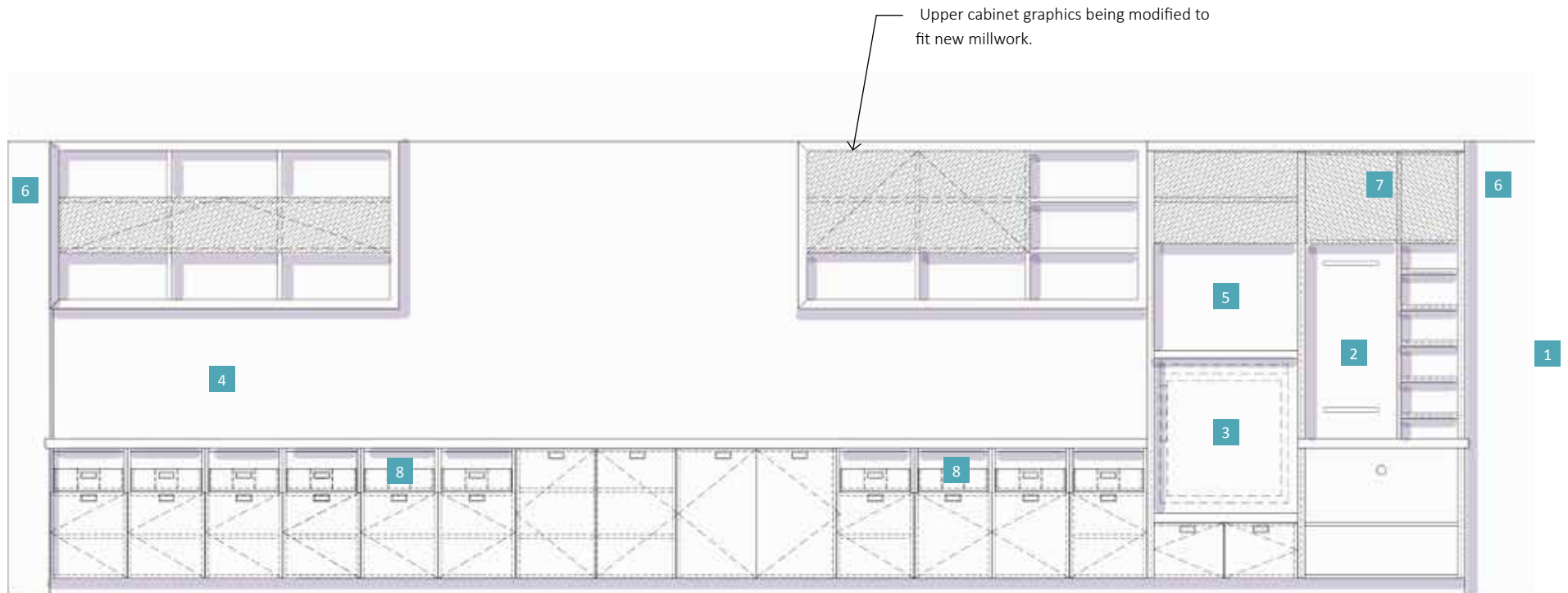
Inspired Table Seating:	12
Lobby (Banquette Seating):	27
Lobby (Ancillary Seating):	11

**Seating Total:** 50





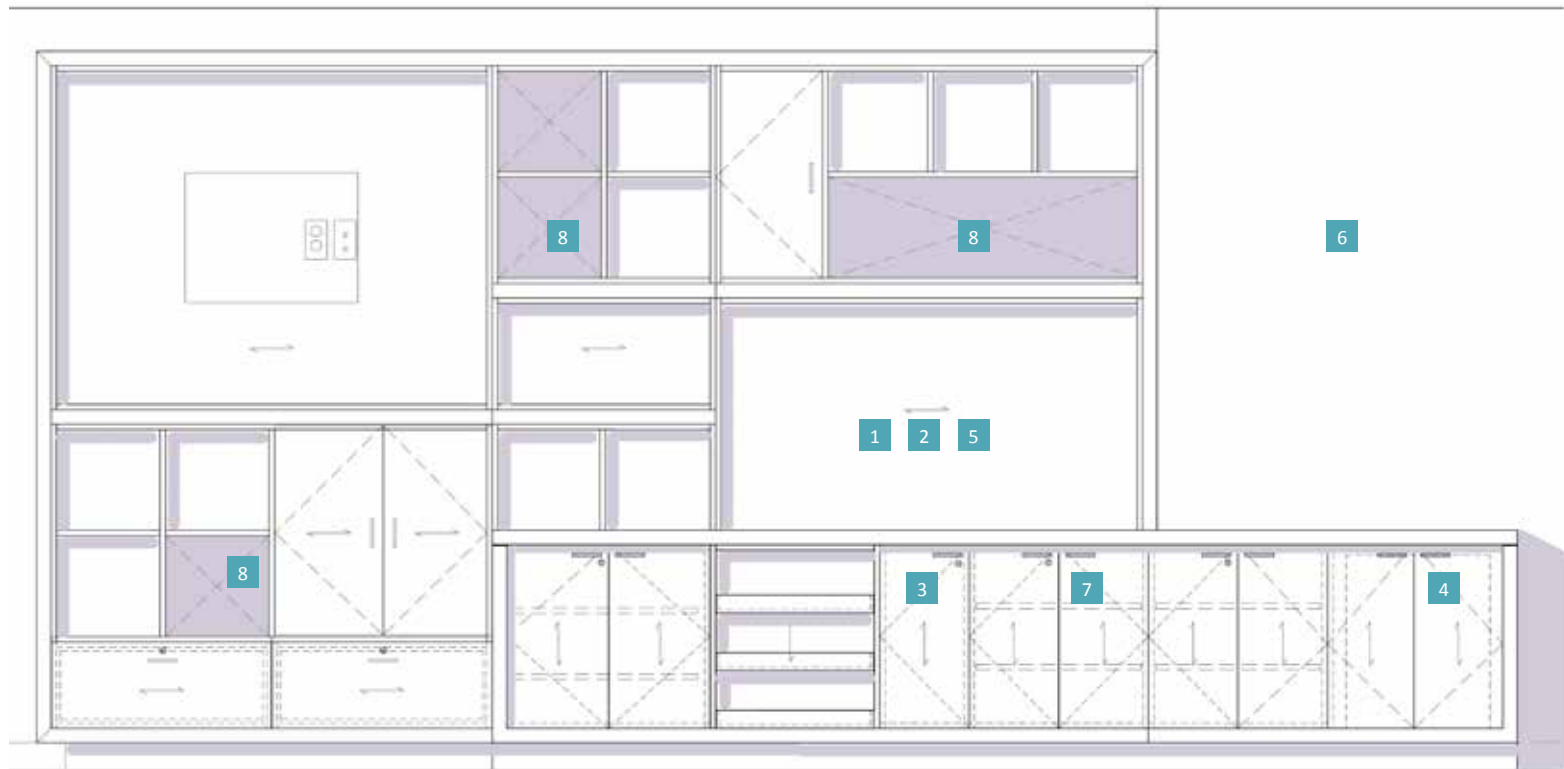
# E **PROTOTYPE V 2.2** (Inspired Table Elevation)



## Summary of Changes:

1. Coffee station removed from line-up.
2. Juice station moved to opposite end of the line (where coffee once was).
3. Refrigerator raised 18" off of the floor.
4. Additional 20" at baked zone for waffles.
5. Additional 32" over refrigerator.
6. Breakfast curtain will wrap around entire length of Inspired Table.
7. Juice machine roller shade no longer needed.
8. Internally illuminated drawers lined with accent colors to draw attention to storage of flatware, etc.

# E PROTOTYPE V 2.2 (Media/Coffee Wall Elevation)



## Summary of Changes:

1. Coffee station integrated into Media Wall millwork.
2. Coffee2Tea wall graphics eliminated.
3. Removal of front load disposable coffee cup dispenser. Cups to be stacked on counter adjacent to coffee urns.
4. Countertop trash moved down the line to encourage stepping to the side.
5. No change in coffee urns and condiment displayware.
6. Reduction in Satisfaction Guaranteed Sign.
7. Lost storage behind former coffee area is integrated into the millwork.
8. Pops of color integrated into cubbie background.

## E **PROTOTYPE V 2.2** (Window Perch)



### Summary of Changes:

1. Freestanding counter-height window perch.
2. Privacy panel at windows.
3. Convenience data and power outlets.

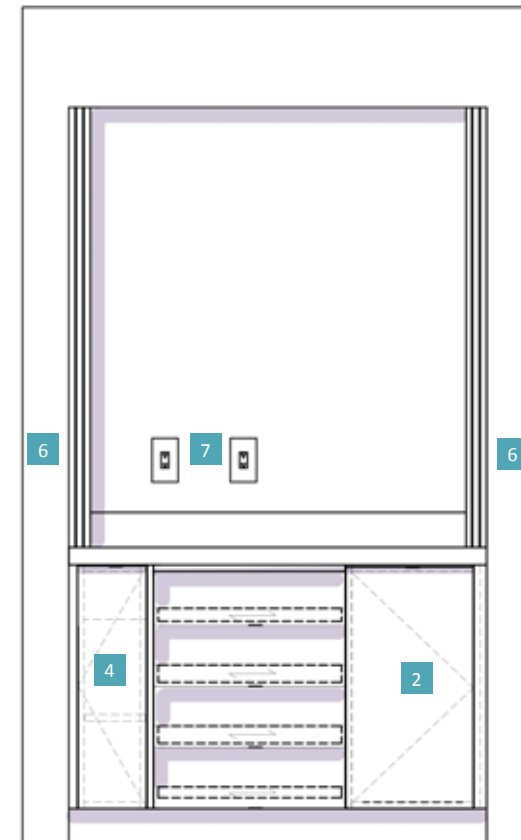
## E **PROTOTYPE V 2.2** (Repurposed Coffee Station)



### BEER/WINE

#### Summary of Changes:

1. Remove cabinet and drawers for new undercounter refrigerator; Perlick HB24WS with stainless steel, glass front, lockable door and interior lighting. Provide proper clearance/ventilation and power for refrigerator, as per manufacturer's specifications.
2. Install infill panel.
3. Trash cabinet to remain.



### WAFFLE STATION

4. Remove front load disposable coffee cup dispenser and door, replace with new door.
5. New display shelving for wine, beer and additional market snacks.
6. Retracting locking doors.
7. Add 20 amp duplex outlet to support waffle makers.